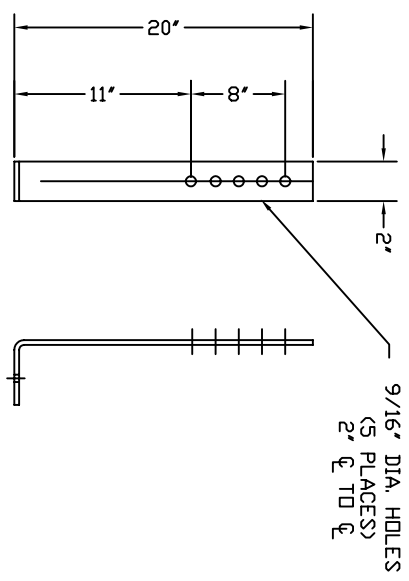
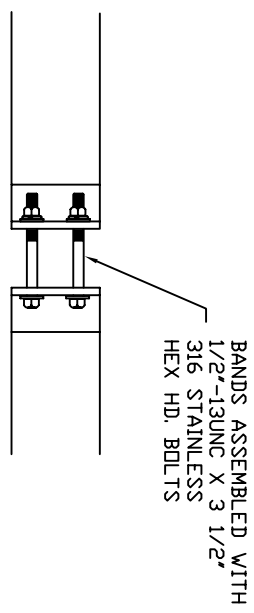
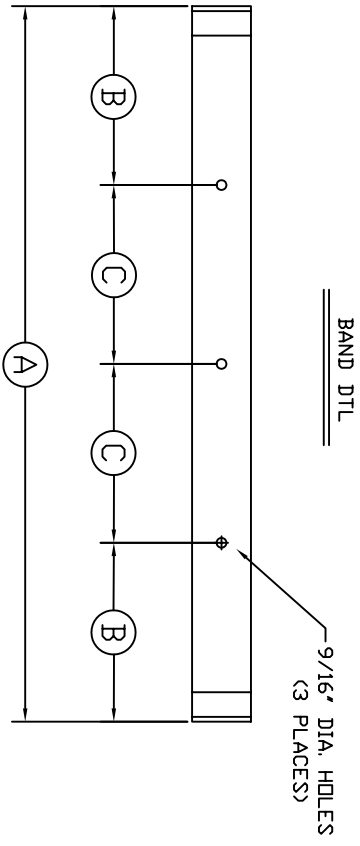


DESIGN DATA

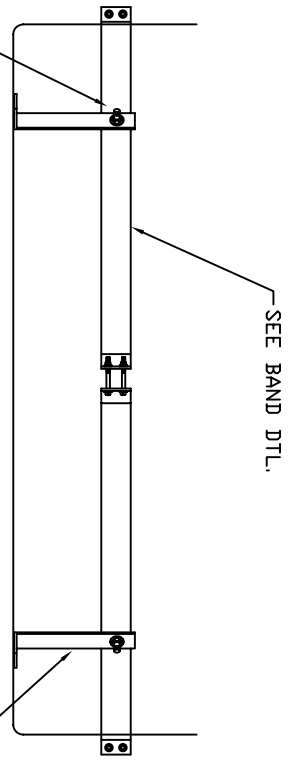
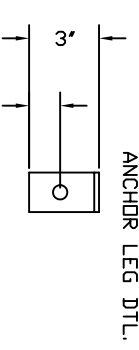
TANK DIA.	BAND LENGTH	NO. OF BANDS	HOLE LOCATION	NO. OF LEGS
29" DIA.	29'	3	A	3
35" DIA.	35'	3	B	3
48" DIA.	36'	4	C	4
60" DIA.	45 5/8"	4	11 3/8"	4
64" DIA.	48"	4	8"	4
72" DIA.	55'	4	13 3/4"	4
86" DIA.	66'	4	11'	4
90" DIA.	69'	4	11 1/2"	4
96" DIA.	74'	4	12 5/16"	4
105" DIA.	81'	4	20 1/4"	4
119" DIA.	61'	6	10 1/2"	6
143" DIA.	74'	6	13"	6

MATERIALS

BANDS: TO BE MADE FROM 4'-12GA. 316 STAINLESS STEEL WITH 1" X 1"- 7GA. S/S ANGLE (2 PLACES)
 ANCHOR LEG: TO BE MADE FROM 2" X 7 GA. STAINLESS FLAT STOCK WITH A 3' 90 DEG. BEND



LEG ASSEMBLED WITH 1/2"-13UNC X 1 1/2" 316 STAINLESS CARRIAGE BOLTS



REV	REVISION DESCRIPTION	REV DATE
B	UPDATED TITLE BLOCK	8/8/09 MG
A	CORRECTED BAND LENGTH ON 105" DIA., ADDED INT BANDS	3/12/07

300 N TAYLOR ROAD
 GARRETT, IN 46738
 PHONE: (260) 357-3181
 FAX: (260) 357-3738

Loann
 CORPORATION OF AMERICA

TITLE: STANDARD 316 STAINLESS STEEL TIE DOWN ASSEMBLY

DRAWN BY: _____
 DRAWN DATE: 4/01/93
 DWG NUMBER: TDA001
 REV: B